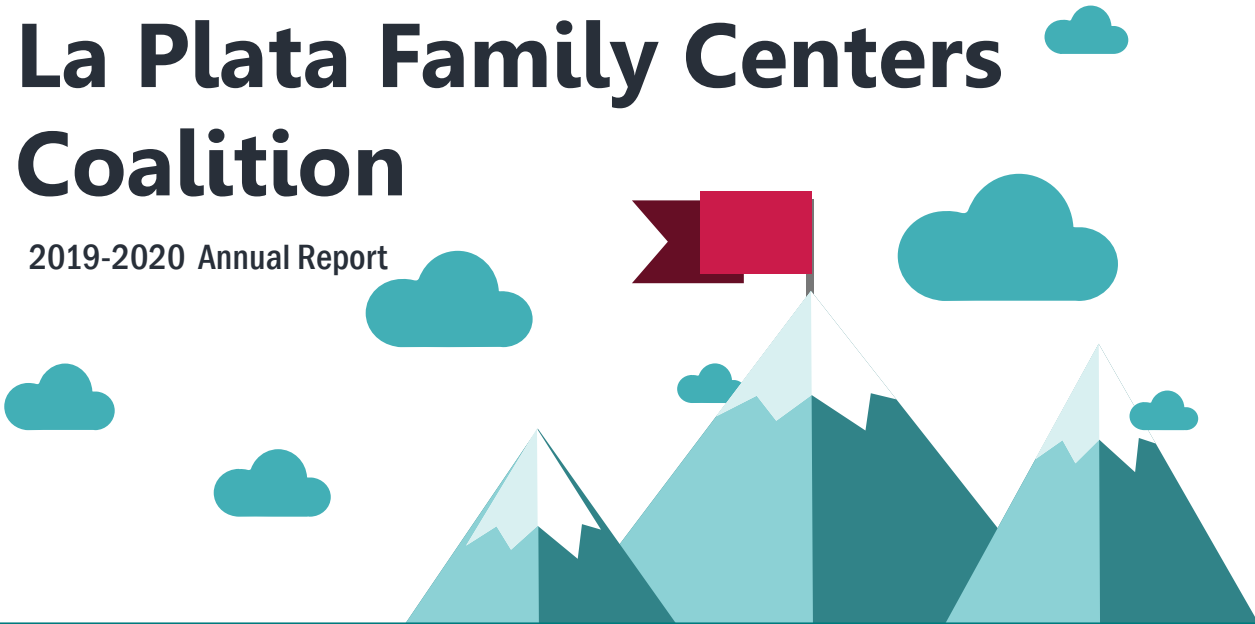


La Plata Family Centers Coalition

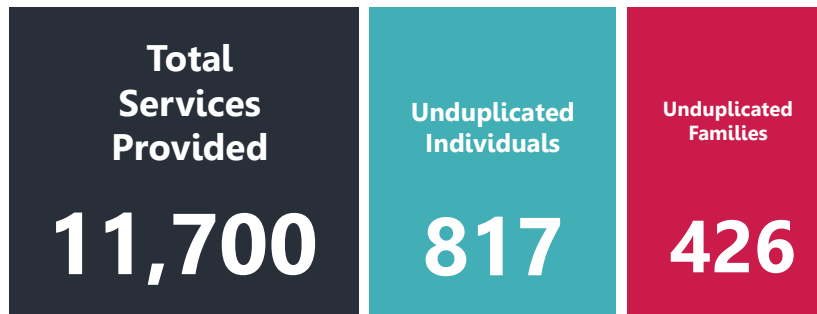
2019-2020 Annual Report



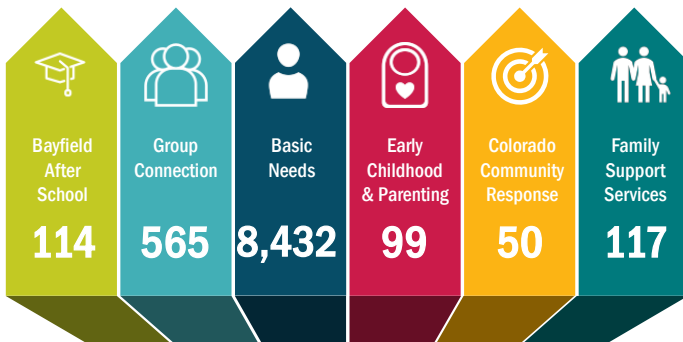
OUR MISSION

"Through education, resource networking and positive relationship building, we form respectful, productive family partnerships that create thriving, empowered individuals who are self-reliant and who envision a hopeful future for themselves, their families and their communities."

Number Of Services Provided



Participants Served by Program:



The Giving Garden



We harvested over 1,104 pounds of produce reducing food insecurity!



La Plata Family Centers Coalition

2019-2020 Annual Report

Programs

- 1 **Colorado Community Response** provides family navigation services for preventing child maltreatment and strengthening families.
- 2 **Parenting Education** enhances parent resilience through the Parents as Teachers home visiting program and parenting classes.
- 3 **Family Support Services** offers comprehensive case management with a focus on family goals and strengthening family protective factors.

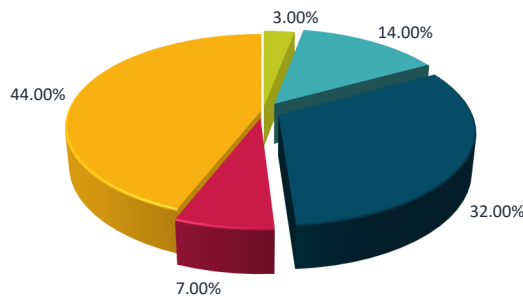
Group Connection
Pumpkin decorating Oct. 2019



Organization Income

- Government
- Donations & Special Events
- Foundation and Trust Income
- Earned Revenues
- Other

2019-2020 Sources of Income



Back To School Fair & B.A.S.E

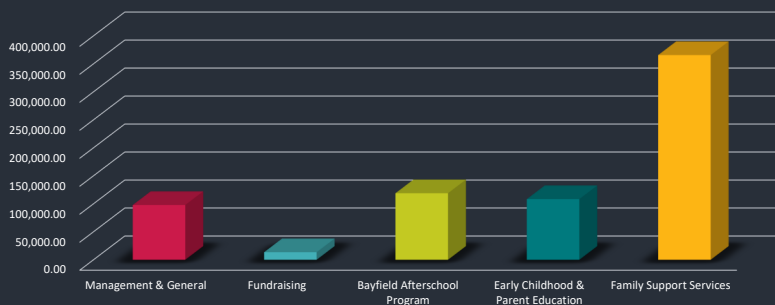


LPFCC Back To School Fair distributed school supplies to over 300 students. BASE provided Afterschool and Summer Care for 114 kids K-5. Thanks to all of our partners and sponsors for making this possible!



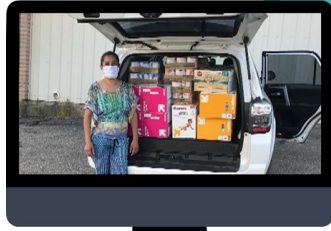
Organization Expenditures

2019-2020 Organizational Expenditures



LPFCC Responds To COVID-19

LPFCC 2020 COVID-19 Relief Efforts



1

FEMA Supplies:

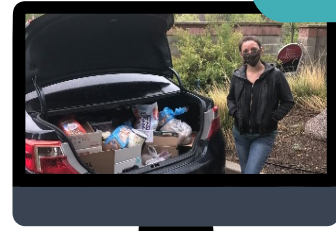
LPFCC coordinated and distributed 12 pallets of diapers, formula and wipes in both La Plata and Archuleta counties.



2

Parent Leader Network:

Our Parent Leader Network supported 106 families on a weekly basis with concrete resources such as food, diapers, clothes and emotional support.



3

Parents as Teachers:

PAT parent educators supported families by delivering food boxes, grocery store gift cards, gas vouchers, diapers, and formula to families in the program.

Along The Way...



“KEEP CALM AND CARRY ON”

COVID-19 (March-June 2020)



Emergency Assistance:

Distributed over \$33,000 in bill assistance payment, rent, car insurance, food & more!

Food Distribution:

LPFCC collaborated with local businesses and non-profits to distribute 8,400 ready meals.

Parent cafés:

Offered online opportunities for parents to connect and to alleviate feelings of isolation.

Virtual Visits:

Parent educators assessed family needs and hardships due to Covid-19 and connected them to resources in the community.

Activity Packages:

Child activity packets were distributed through LPFCC to keep children in our community learning and engaged.

